



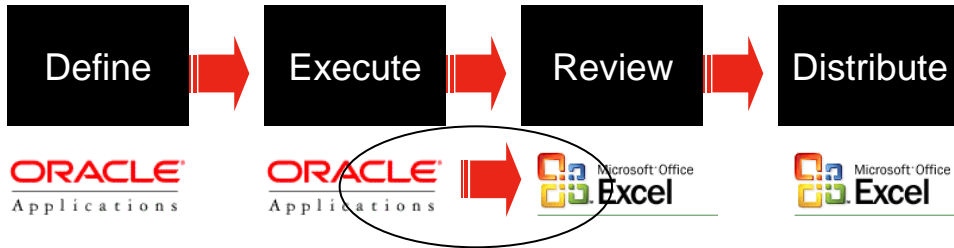
Do your Oracle Finance Reporting in Excel



- Current Reporting Challenges
- GL Wand
 - ★ Architecture
 - ★ Brief product history
- FSG Converter
- Why Excel?
- Reports Wand
- **Live Demonstration**
- Current Customers
- Why choose GL Wand?
- Questions & Answers



Reporting cycle



- Finance users demand highly productive review, modelling and distribution interface.

- Have MS Excel on desktop and can use it.



Many organizations employing dual Oracle & Microsoft strategies

Monthly Reporting

- Changing requirements
- Specialist FSG skills
- FSG limitations
- Loss of productivity

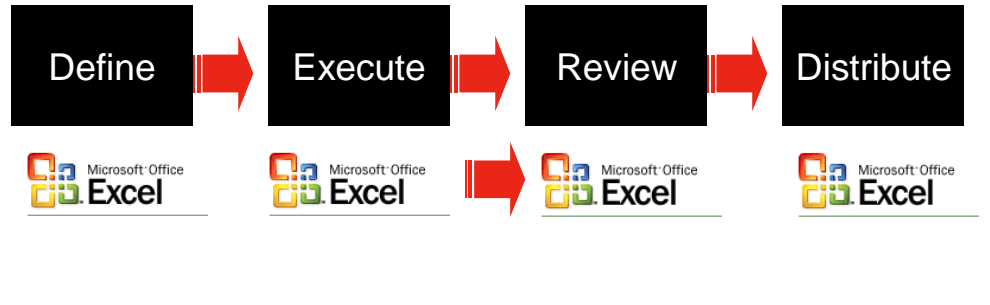
Ad hoc Enquiries

- Time to log on
- Time to query
- Time to convert to distribute
- User frustration

Oracle Excel integration

- Manual refresh process / retype
- Iterative
- Loss of productivity
- User frustration

Reporting cycle



- Proven reporting tool built around finance role in organizations running Oracle Applications

- Installs in minutes

- Easy to use



Monthly Reports **GLwand**

building intelligent Oracle GL workbooks

- Use custom functions to retrieve balances
- Copy / Paste to edit report definitions
- Highly productive

Ad hoc Enquiry **GLwand**

building intelligent Oracle GL workbooks

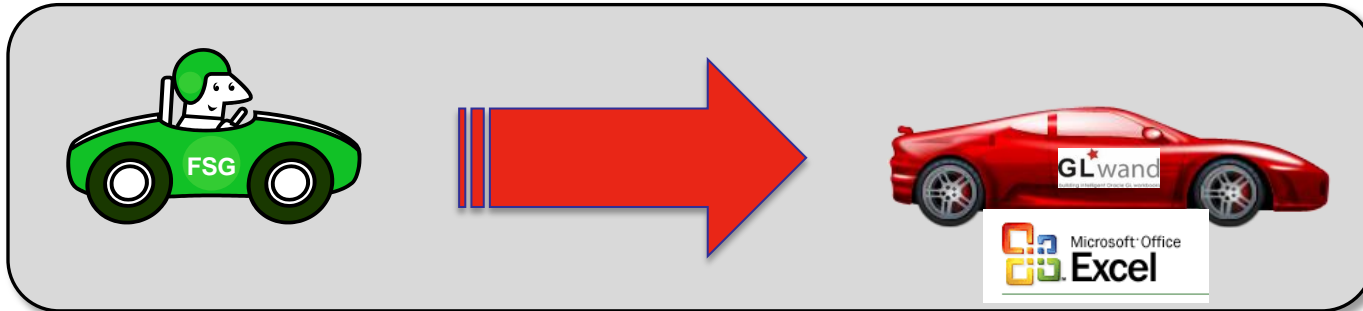
- Fast query to resolution
- Drill to details
- Distribute information
- Reduced frustration

Oracle Excel integration **GLwand**

building intelligent Oracle GL workbooks

- HTTP connect direct Oracle DB
- Apps sign on / security
- Range / Sheet / Workbook refreshable on demand
- Cells refreshed in place





- **Rapid ROI**

- ★ Real time reports using Dynamic Functions
- ★ Rapid User Adoption
- ★ Higher productivity throughout the reporting cycle

- **Superior User Experience**

- ★ Easy to use
- ★ GL Wand is fast and allows drilldown to detail as needed

- **Low risk:**

- ★ Excel is the "Real deal" (Non-excel or even excel-like solutions are often rejected by users as not the real thing)
- ★ Free trial before buying

- **Leverage Existing Investments:**

- ★ Excel is already licensed, installed and supported on the desktop.
- ★ Oracle 11i / R12 is configured and secure. GL Wand detects this setup.

**New
3.90**

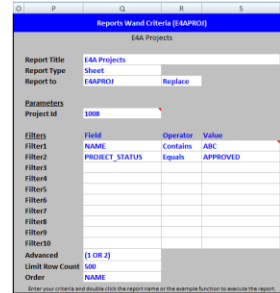
Why Excel?

- **Flexible** – has inherit flexibility to meet changing needs
- **Worksheets** - Used as the working space for data from multiple reports or sources
- **Collaboration** - Used extensively to collaborate & exchange data with others
- **Limited training** - Excel skills abound, little training is needed
- **Consistent** - Supports org's existing MS Excel investments
- **Success** - Users willing and able to make Excel based solutions successful!

SUM		Average	Sum	Average	Count
Raw Cost	Raw Cost Rate	Burdened Cost	B/C rate	Records	
1,461,158.62	38.46	2,537,866.05	88.56	3,655.00	

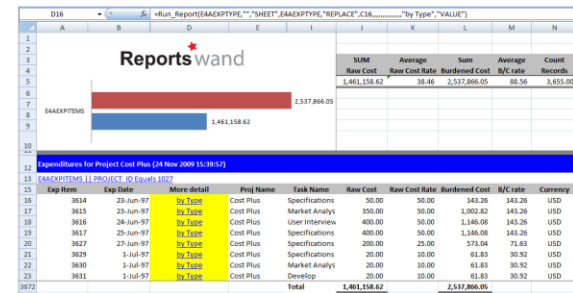
Exp Item	Exp Date	More detail	Proj Name	Task Name	Raw Cost	Raw Cost Rate	Burdened Cost	B/C rate	Currency
3614	23-Jun-97	by Type	Cost Plus	Specifications	50.00	50.00	143.26	143.26	USD
3615	23-Jun-97	by Type	Cost Plus	Market Analys	350.00	50.00	1,002.82	143.26	USD
3616	24-Jun-97	by Type	Cost Plus	User Interview	400.00	50.00	1,146.08	143.26	USD
3617	25-Jun-97	by Type	Cost Plus	Specifications	400.00	50.00	1,146.08	143.26	USD
3627	27-Jun-97	by Type	Cost Plus	Specifications	200.00	25.00	573.04	71.63	USD
3629	1-Jul-97	by Type	Cost Plus	Specifications	20.00	10.00	61.83	30.92	USD
3630	1-Jul-97	by Type	Cost Plus	Market Analys	20.00	10.00	61.83	30.92	USD
3631	1-Jul-97	by Type	Cost Plus	Develop	20.00	10.00	61.83	30.92	USD
Total					1,461,158.62		2,537,866.05		

- **Excel** based reporting
- **Add-on** to GL Wand
- For **any** Oracle EBS data
- Run own **SQL** queries
- Use **full Excel** formatting, pivot, table formulae & charts
- **Browse** data, **drill** to detail
- Build reports in **final format** and simply **refresh**
- Apply 11i/R12 **security**



BASIC LEVEL

User can modify parameters, filters or options on a Criteria Sheet and execute the report



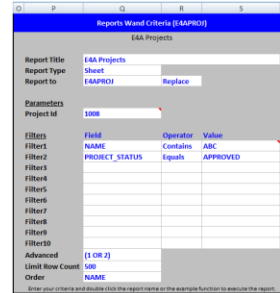
ADVANCED LEVEL

Users can double click links to execute new reports based on relative values contained in the current report.

Proj ID	Expenditure type	Quantity	Raw Cost	Raw Cost (Avg)	Burden Cost	Cost Rate
1027	Auto	668.00	200.88	0.31	233.03	2.38
1027	Hotel	21,048.36	21,048.36		24,416.30	119.48
1027	Meals	11,072.96	11,072.96		12,844.04	121.80
1027	Airfare	98,368.88	98,368.88		68,563.29	107.88
1027	Material	1.00	100.00	100.00	100.00	100.00
1027	Supplies	10,611.35	10,611.35		12,309.19	34.80
1027	Commodities	2,294.08	129,055.00	58.45	150,399.80	6,530.80
1027	Car Rental	5,225.25	5,225.25		6,061.40	80.04
1027	Equipment	98,368.88	98,368.00		119,008.59	85.28
1027	Professional	2,802.00	393.66	0.15	455.93	16.22
1027	Administrative	3.00	30.00	30.00	1,996,230.65	206,541.52
1027	Computer Equipment	21,460.47	21,714.43		23,672.11	23.64
1027	Telecommunications	4,422.00	622,965.30	136.65	721,526.38	11,571.35
1027	Communications Equipment	1,153.00	1,153.00		1,153.00	
	Total		1,461,158.82		2,537,866.05	

Examples

- **Optimize**— a key business process by providing the right information in the right format quickly and easily (and refreshable)
- **Meet very complex reporting needs**- Meet even the most complex of requirements using the report building components comprising custom SQL, Run Report Functions, Report Layouts, Excel Power
- **Extend GL Wand**- extend standard GL Wand balance, journal or sub ledger drill downs to user defined views.
- **Do Historical analysis**- Save previous data and then report 'across' reports.



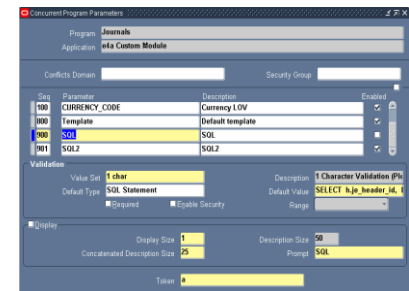
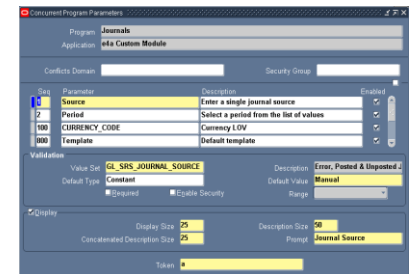
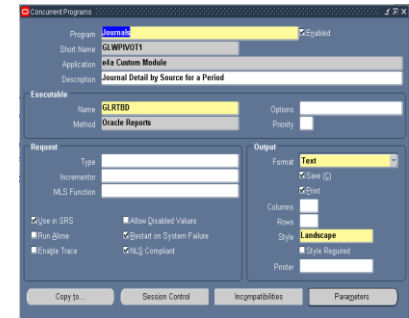
“Reports Wand is an awesome tool! I like where it’s going”

Derik Tran, Project Delivery Manager, Tetra Tech Inc

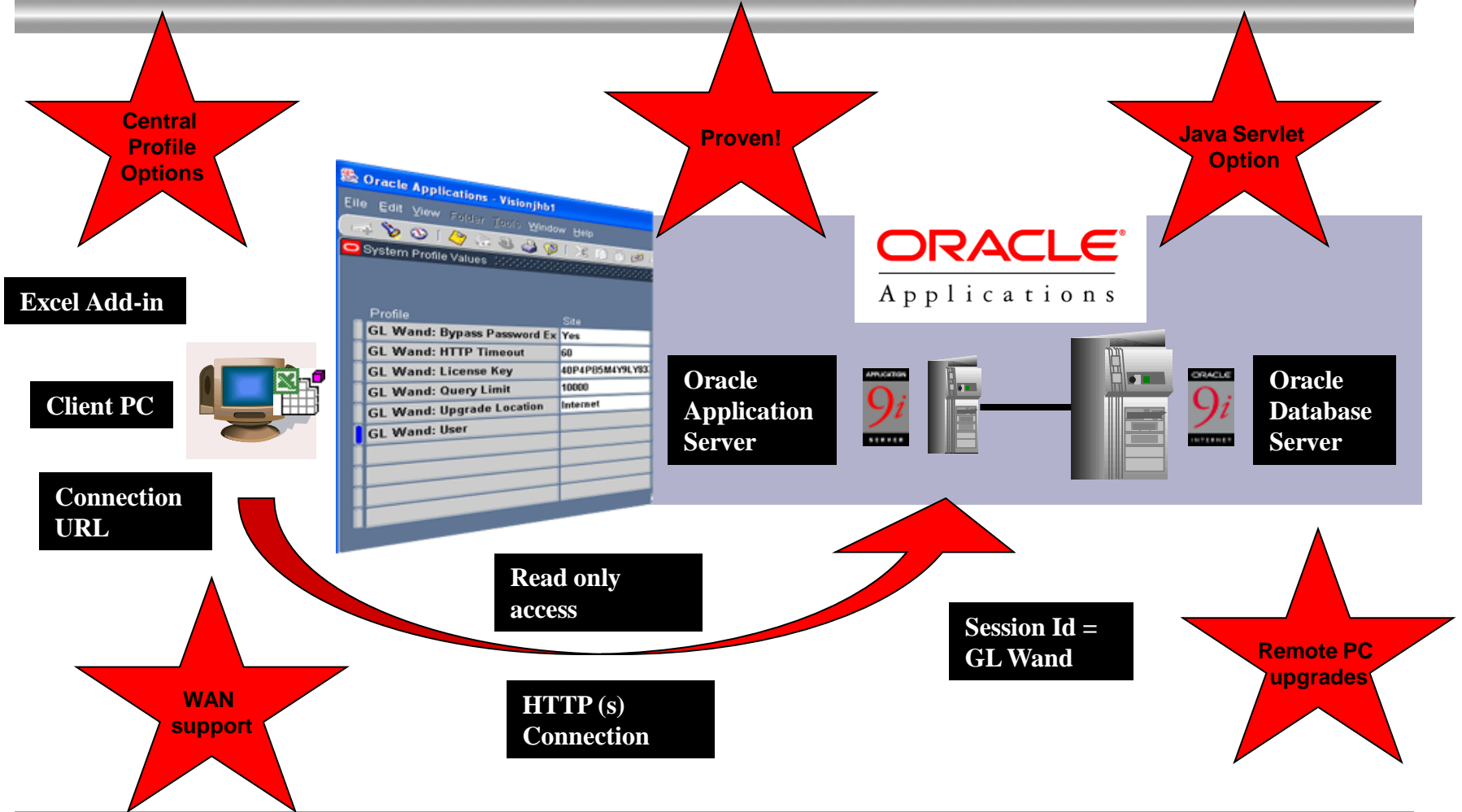
	SUM	Average	Sum	Average	Count
Raw Cost	1,461,158.82	38.46	2,537,866.05	88.56	3,655.00

Exp Item	Exp Date	More detail	Proj Name	Task Name	Raw Cost	Raw Cost Rate	Burdened Cost	B/C Rate	Currency
3614	23-Jun-97	by Type	Cost Plus	Specifications	50.00	50.00	102.28	2.0456	USD
3615	23-Jun-97	by Type	Cost Plus	Market Analysis	350.00	50.00	1,002.82	2.8635	USD
3616	26-Jun-97	by Type	Cost Plus	User Interview	400.00	50.00	1,346.08	3.3652	USD
3617	26-Jun-97	by Type	Cost Plus	Specifications	400.00	50.00	1,146.08	2.8652	USD
3627	27-Jun-97	by Type	Cost Plus	Specifications	20.00	20.00	573.04	28.6520	USD
3629	1-Jul-97	by Type	Cost Plus	Specifications	20.00	10.00	61.83	30.92	USD
3630	1-Jul-97	by Type	Cost Plus	Market Analysis	20.00	10.00	61.83	30.92	USD
3631	1-Jul-97	by Type	Cost Plus	Develop	20.00	10.00	61.83	30.92	USD
3672			Total		1,461,158.82		2,537,866.05		


- **Small footprint-** No additional hardware, or even Tables as definitions stored in Oracle's concurrent programs definition repository
- **Efficient SQL-** 'Report Definitions' contain SQL created using your tool of choice or handcrafted.
- **Save IT time-** allow end users to customize and control the layout and format of multiple report variants
- **Leverage Oracle** – reuse existing usernames, password, security rules and apply Oracle value sets to queries.
- **Limit depth** of query by requiring user entered run time parameters
- **Limit** breadth of users by sharing Reports to existing Oracle responsibilities
- **Limit row level data** by enforcing segment value security rules to limit the rows to only the allowable CCID's.



Architecture



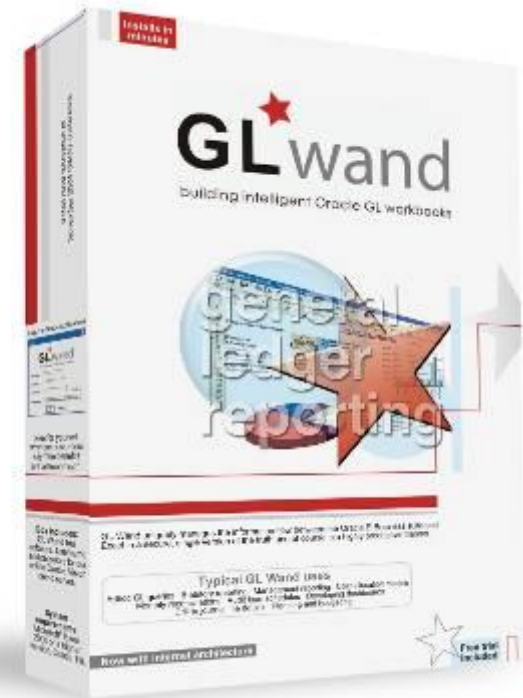
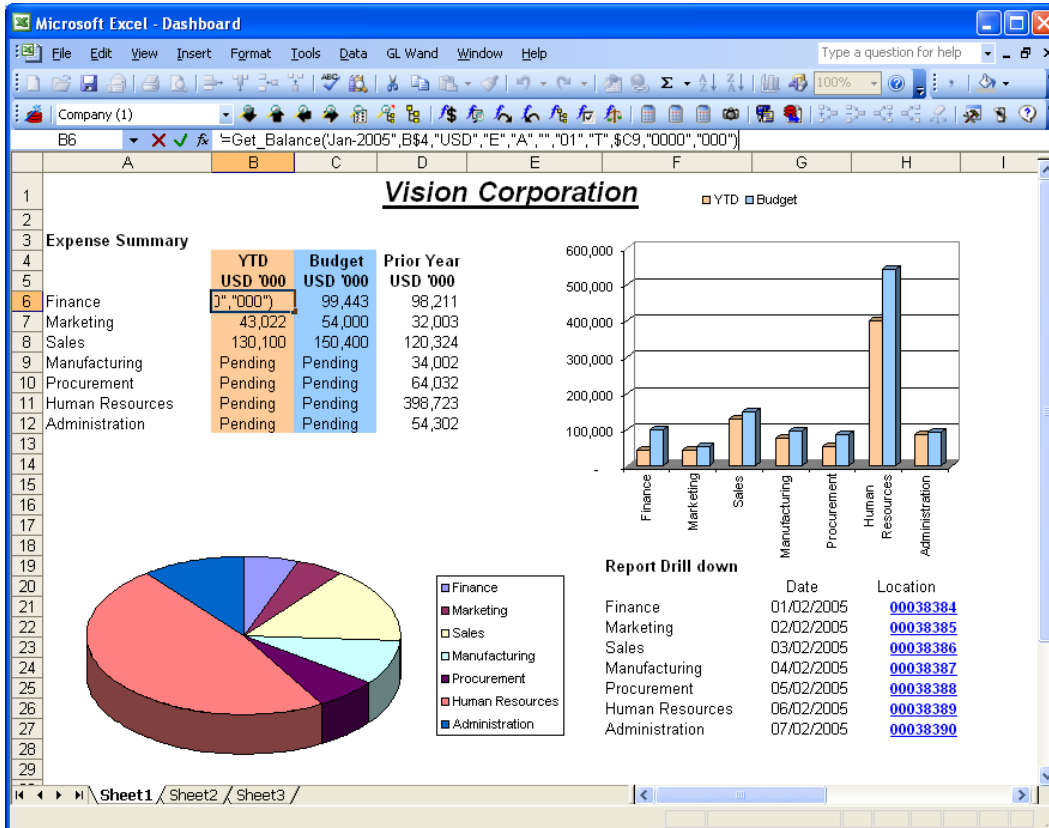
History

E-business suite →	11.5.7 – 11.5.9	11.5.10		12
Connectivity options →	DB package	DB package	Java Servlet	Java Servlet
GL Wand versions Compatible	3.30 / 3.50	3.30 / 3.50 / 3.80	3.50 / 3.80	3.50 / 3.80
MS Office requirements  →	Office 2000 Office 2003 Office 2007	Office 2000 Office 2003 Office 2007	Office 2000 Office 2003 Office 2007	Office 2000 Office 2003 Office 2007

Brief product history

- Mar-03** Proof of concept released
- Sep-04** First sale to Schroders Investment Corporation
- Jan-06** GL Wand 3.00 series released with HTTP framework
- Jun-06** GL Wand 3.10 Subleger drill downs, many enhancements
- Feb-07** GL Wand 3.20 Twenty Three New features including Office 2007 support
- Aug-07** GL Wand 3.30
- Dec-07** GL Wand 3.50
- Oct-08** GL Wand 3.86
- Jul-09** GL Wand 3.90 FSG Converter!
- Dec-09** GL Wand 4.00 Reports Wand













Adcock Ingram
Al Fahim Enterprises
Auscott Limited
Australian Prudential Regulation Authority (APRA)
Australian Red Cross Blood Service
Avista Corp
Avtec Limited
Bank of Scotland Treasury
Bartter Enterprises Pty Ltd
Bateman Projects Limited
Bossini Enterprises Limited
Brick Warehouse
Capital Finance Australia Limited
Cell C (Pty) LTd
Clark County
Cochlear Ltd
Coogee Chemicals
Department of Indigenous Affairs (DIA)
Destination Hotels & Resorts
DHL Excel Supply Chain Singapore Pte Ltd
Edgars Consolidated Stores Ltd
Ellerine Furnishers (PTY) Ltd
Epol a Division of Rainbow Farms
Euramax Exterior Products
Gallardo
Geratech
GFI Group Inc

Harmony Gold Mining Pty Ltd
HBO Films
Indianapolis Airport Authority
Insurance Commission of Western Australia (ICWA)
Integro Insurance Brokers
Internet Solutions
ITV Plc
JSC Severstal
Kawasaki Kisen Kaisha, Ltd. (K
Knapp
KPMG
Lancashire County Council
Lancashire Fire & Rescue
Lancashire Police Authority
Louisville Metro Government
MasterCard International
MB Petroleum Services LLC
Mediacom Communications Corp
MediMedia
Metrobus
Multiplex Limited
National Health Laboratory Service
NATO CIS Services Agency
Network Ten
Nextel Communications Argentina SA
North-West University
Optium Corporation



Paramount Citrus Association (PCA)
Paramount Farms
Parliament of Victoria
PAS Technologies
Perry Equipment Corp
Red Rock Consulting Pty Ltd
Roll International
Rural Ambulance Victoria
Samim
SARCC
Schroders Investment Management Limited
Schweitzer Mauduit Intl Inc
SITA (Pty) Ltd
South African Tourism
The British Library
The University of Melbourne
Tiger Management Services
Tourism Australia
University of Johannesburg
University of the Witwatersrand
University of Western Sydney
Vodacom (Pty) Ltd
VW Credit Inc
Wesbank
Wesfarmers Energy Limited
Wesfarmers Premier Coal Limited
Wyndham Hotels and Resorts



<p>1) Easy to install and use. Developed for Oracle EBS customers only. Simple Central profile options in Oracle. Detects your GL setup including your existing segment hierarchies.</p>	<p>ORACLE E-BUSINESS SUITE 11i friendly</p>	<p>Test for yourself in the trial.</p>
<p>2) Report data always = Oracle EBS data. GL Wand is fast and will always show the same as Oracle. No PC Cache involved.</p>		<p>Test refresh performance direct from Oracle in trial</p>
<p>3) Lower cost of ownership. Easy PC maintenance with modern Http architecture. No odbc connections, no TNS names, no Sql Net. Automatic version upgrades via internet.</p>		<p>Ask technologists to review the architecture and desktop install.</p>
<p>4) Secure. GL Wand uses Oracle EBS usernames & password and enforces Oracle's security rules. No separate desktop components to maintain security and user license keys. Supports HTTPS.</p>		<p>Test for yourself in the trial.</p>
<p>5) Proven global product support. Many Oracle customers on GL Wand around the globe. Multiple timezones / languages supported.</p>		<p>Ask our other global customers. Test us in trial.</p>
<p>6) Proven remote report development services and training services available. No implementation needed!</p>		<p>Choose to do it yourself or ask us to assist</p>
<p>7) Try before you buy. Due to the simple installation process, it is possible to be up and running in trial mode in minutes.</p>		<p>Low risk purchase.</p>

- In house 30 day trial
 - Unlimited users
 - Install .msi add-in (PC)
 - Run script to load DB package
 - Configure URL
 - Logon with GL Wand
 - Request a trial key
 - Use Report wizard to build report

Quickstart guide

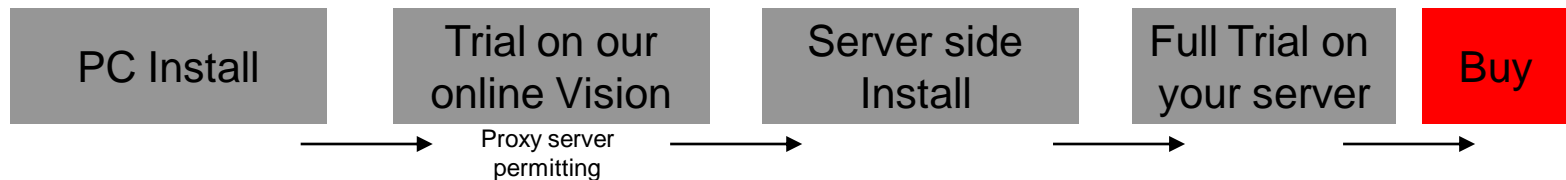
Quickstart guide

- 1) Install GL Wand on PC
- 2) Test installation by connecting to our online Vision instance
- 3) Install GL Wand server components
- 4) Configure a new connection in GL Wand to your server
- 5) Log into your server with GL Wand
- 6) Request a full-use Trial Key from within GL Wand

www.excel4apps.com

ORACLE PARTNER

GLwand
building intelligent Oracle GL workbooks





Thank You

Chris Meyer

Regional Director, Excel4apps

chris.meyer@excel4apps.com

(919) 238 4040